

Missouri State Beekeepers Association

P.O. Box 448 Oak Grove, MO 64075

www.mostatebeekeepers.org

February 2010

Eugene Makovec
Editor

editor@mostatebeekeepers.org

Join us March 12-13 in historic Hannibal for Spring Meeting

Jennifer Berry is featured speaker

by Sharon Gibbons

Please join us for our annual Spring Meeting March 12-13 in Hannibal. We have an exciting agenda planned and we hope that all of our Missouri beekeepers will attend. Remember, communication and learning are the keys to successful beekeeping.

This two-day meeting will be held at **The Quality Inn & Suites:** 120 Lindsey Drive, Hannibal, MO 63401 573-221-4001

The group room rate is \$76.00 plus tax for a king or a double. This rate includes a full hot buffet breakfast. Please mention MSBA to get the special rate. The block of rooms will be held for us until Feb. 19th, although the rate will be the same up to the time of the meeting if rooms are available. We had a meeting at this hotel three years ago, and most beekeepers were happy with the accommodations.

Once again, member Bernie Andrew is allowing us to tour his honey house, across the border in Illinois. This is currently scheduled for Friday morning. I would also like to see if we could arrange some early spring management classes (with active beehives), weather permitting. If not outside, then in the meeting room.

Our main speaker will be **Jennifer Berry**. She is an Agricultural Research Coordinator at the University of Georgia, College of Agriculture/Entomology. She has a Master's degree in entomology, and works primarily on bee research projects under Keith Delaplane. Her talks will focus on how we can keep our bees healthy. Some of her most recent publications involve small-cell comb foundation and varroa mites; integrated pest management against *Varroa destructor*, work with hygienic behavior in cape bees, and apis mellifera in regard to small hive beetle larvae.

More about our speaker:

Before launching her career in apiculture, Jennifer Berry lived in Los Angeles as a starving comedian and actress. After realizing that

her Hollywood Dream would not come true she decided to return to school and study entomology (it made sense at the time). Her career took another sharp turn when she took a beekeeping course with Dr. Keith Delaplane at the University of Georgia. She was hooked for life. She did her Master's thesis under his direction and upon graduation immediately received the research coordinator and honey bee lab manager job at the University of Georgia. Jennifer's research has been published in American Bee Journal, Journal of Apicultural Research, the Annals of the Entomological Society of America, and Bee Culture. She



Jennifer Berry

was awarded a silver medal for her website (www.ent.uga.edu/bees) at the 2001 Apimondia Congress in South Africa. Her research over the years has focused on the sub-lethal effects of pesticides on honey bees, an ambitious queen breeding program, and incorporating IPM techniques for mite and beetle control. In 2006 she was the Eastern Apicultural Society president and hosted the annual meeting in Young Harris, Georgia. Jennifer is also a regular columnist for Bee Culture magazine and travels extensively speaking to local, state, national and international beekeeping associations.

Hannibal celebrates Mark Twain

"What ought to be done to the man who invented the celebrating of anniversaries? Mere killing would be too light. Anniversaries are very well up to a certain point."

– Mark Twain

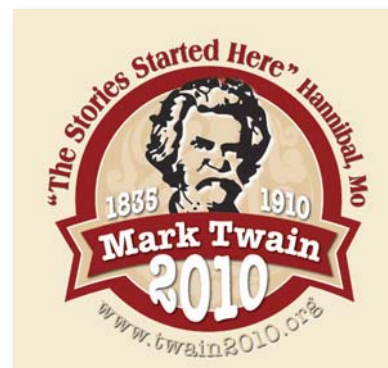
Samuel Langhorne Clemens was born November 30, 1835 and died April 21, 1910. The year 2010 marks the 175th anniversary of his birth, the 125th anniversary of Twain's pinnacle work *Adventures of Huckleberry Finn*, and the 100th anniversary of his death. Join Hannibal in a 365 day celebration of the life of America's most beloved author.

TWAIN2010.org is the go-to site for All Things Mark Twain during the year 2010. From Berkeley, CA to Elmira, NY, from Hannibal, MO to Hartford, CT – and all around the world – we will post events, programs, celebrations, readings, gatherings, clambakes, and all manner of hoopla as it pertains to celebrating the life, legacy and works of Mark Twain. This is a nationwide celebration, and your adventure starts here.

Hannibal Convention and Visitors Bureau

Toll-free 1-800-TomandHuck or 573-221-2477

www.visithannibal.com



INSIDE THIS ISSUE

From the President	2	Honey Princess report	9
How bees land	3	Cookin' with honey!	9
<i>Mechanics are complicated</i>		<i>Honey apple cake/honey sauce</i>	
Spring Meeting agenda	4	Local associations	11
Meeting vendor list	5	Membership application ..	12
<i>Place orders for meeting pickup</i>		Honey Queen report	13
Meeting registration form	6	Directory of officers	13
<i>Pre-registration due Feb. 28</i>			



From the President

by Scott Moser

It seems like we just had the Fall Meeting yesterday, and we are already knocking on the door of the Spring Meeting! Time seems to move faster as I get older. I always thought my Dad was wrong when he was telling me that as a kid, but now I know better!

Plans are coming together nicely for the Spring Meeting which is scheduled for March 12-13 in Hannibal. The last time we had a meeting there, it was a great time. Scheduled to speak is Jennifer Berry, who is the Agricultural Research Coordinator at the University of Georgia, College of Agriculture/Entomology. She has a Master's degree in Entomology, and works under Keith Delaplane. She will be speaking about how to keep our bees healthy and happy.

Speaking of flying time, don't let yourself get behind in your winter chores. Now is the perfect time to pore over the new catalogs, gather orders, organize and clean equipment, and order and assemble new equipment. It is also the perfect time to reach out to new prospective beekeepers in your area, help them get started and show them the ropes. Beekeeping is one of those things that is best learned with the help of others. Many of the local associations are putting on Beginning Beekeeping classes this spring. If you are interested in learning beekeeping, or would like to help with a class, contact your local association for more information. I know Three Rivers, Jefferson County, Missouri Valley and Eastern are all offering beginning classes in the eastern part of Missouri. I am sure many of the other associations around the state are as well.

Warm days, which have been mighty few in Missouri this winter, are the opportune time to get out and check your hives. Unless it is above 50 degrees, it isn't good to do a thorough inspection of the colony, but you should focus on food stores to make sure they have enough feed to make

it through the rest of winter and into spring. It seems like there have been a lot of starving hives out there this year. I hate to admit it, but I have lost several hives already this winter to starvation. When I took off honey last fall, they all appeared to have adequate stores on the colonies, but it stayed warm for so long, many ate what they had stored. Also, mud and rain last fall made it hard for me to get into some yards to check how much they had eaten, so they went without supplemental feeding. I don't know which is worse, letting them starve, or apologizing to the landowner about the ruts I cut in his fields trying to get to the colonies to feed them.

Finally, I have been contacted by several people interested in getting local associations together. Many of them have been south of the Missouri River, but a couple of people north of the river have inquired about beginning clubs. Once again, it is my goal to increase the number of local associations north of the river. I know there are a lot of beekeepers up that way who aren't served by local associations. Please feel free to contact me and ask how you can go about getting a local association started. It isn't as difficult as many think it is. It just takes a couple of dedicated people to get the ball rolling.

I hope all have had a wonderful start to 2010, with an eye toward the upcoming honey season. Once again, a new year is upon us filled with hope and promise for a bumper honey crop. Start the New Year out right by planning to attend the Spring Meeting. Good Luck in 2010!



**W
A
L
T
E
R
·
K
E
L
L
E
Y
C
O
.**

We are now taking orders for Package Bees!



3# package w/ Italian Queen.....\$76.00

3# package w/ Russian Hybrid.....\$79.00

Deduct \$1.00 per package over 10 packages

We will have package bees beginning on Saturday March 27th & running through early May. Call early for your preferred shipping or pick up dates.

If you are new to beekeeping and would like to watch a demonstration of a package being installed, you can see this every Saturday during bee days at 10:00 am. Please bring your veil.

We will have Queen Bees available beginning March 30th.

Italian Queens

1-9....\$19.00 -10-24...\$17.50- 25+... \$17.00

Russian Queens

1-9....\$22.00 -10-24...\$20.50- 25+... \$20.00

800-233-2899



www.kelleybees.com

We are a full line manufacturing and distributing company with 86 years of service to the beekeeper. We can supply you with all of your beekeeping needs. Whether you're a hobbyist or a commercial operator Kelley's is the only name you need to know.



How bees land is more complicated than we may have thought

New research could have implications for human flight technology

Bee Supply Companies have for years sold a hive stand that had a slanted landing board. When asked why slanted, and why that particular slant, the answer has always been, that's the way it's always been. Perhaps there is a better reason.

Landing is tricky: Hit the ground too fast and you will crash and burn; too slow and you may stall and fall. Bees manage their approach by monitoring the speed of images moving across their eyes. By slowing so that the speed of the looming landing pad's image on the retina remains constant, bees manage to control their approach. But what happens in the final few moments before touch down? And how do bees adapt to landing on surfaces ranging from the horizontal to upside-down ceilings? Flies land on a ceiling by simply grabbing hold with their front legs and somersaulting up as they zip along, but a bee's approach is more sedate. Mandyam Srinivasan, an electrical engineer from the Queensland Brain Institute, The University of Queensland and the Australian Research Council's Vision Centre, knew that bees must be doing something different from daredevil flies. Curious to know more, Srinivasan teamed up with Carla Evangelista, Peter Kraft, and Judith Reinhard from the University of Queensland, and Marie Dacke, visiting from Lund University. The team used a high-speed camera to film the instant of touch down on surfaces at various inclinations and published their discoveries in The Journal of Experimental Biology on December 28, 2009 at <http://jeb.biologists.org>.

First the scientists built a platform that could be inclined at any angle from horizontal to inverted (like a ceiling), then they trained bees to land on it and began filming. Having collected movies of the bees landing on surfaces ranging from 0-180 degrees, and every 10-degree inclination between, Evangelista began the painstaking task of manually analysing the bees' landing strategies, and saw that the bees' approach could be broken down into three phases.

Initially the bees approached from almost any direction and at any speed, however, as they got closer to the platforms, they slowed dramatically, almost hovering, until they were 16mm from the platform when they ground to a complete halt, hovering for anything ranging from 50ms to over 140ms. When the surface was horizontal or inclined slightly, the bees' hind legs were almost within touching distance of the surface, so it was simply a matter of the bee gently lowering itself and grabbing hold with its rear feet before lowering the rest of the body.

However, when the insects were landing on surfaces ranging from vertical to 'ceilings', their antennae were closest to the surface during the hover phase. The team saw that the antennae grazed the surface and this contact triggered the bees to reach up with the front legs, grasp hold of the surface and then slowly heave their middle and hind legs up too. 'We had not expected the antennae to play a role and the fact that there is a mechanical aspect of this is something that we hadn't thought about,' admits Srinivasan.

Looking at the antennae's positions, the team realised that in the final stages as the insects approached inverted surfaces, they held their antennae roughly perpendicular to the surface. 'The bee is able to estimate the slope of the surface to orient correctly the antennae, so it is using its visual system,' explains Srinivasan. But this is surprising, because the insects are almost completely stationary while hovering and unable to use image movement across the eye to estimate distances. Srinivasan suspects that the bees could be using stereovision over such a short distance, and is keen to test the idea.

Finally the team realised that bees are almost tailor made to land on surfaces inclined at angles of 60 degrees to the horizontal. 'When bees are flying fast their bodies are horizontal, but when they are flying slowly or hovering their abdomen tilts down so that the tips of the legs and antennae lie in a plane that makes an angle of 60 degrees,' explains Srinivasan, 'so the legs and antennae all touch down simultaneously on surfaces inclined at 60 degrees. 'It seems like they are adapted to land on surfaces tilted to 60 degrees and we are keen to find out whether many flowers have this natural tilt,' says Srinivasan.

Srinivasan is optimistic that he will eventually be able to use his discoveries in the design of novel flight control systems.

This article is published in the Journal Of Experimental Biology <http://jeb.biologists.org>. Request the full text from kathryn@biologists.com.

12-23-09 Catch the Buzz. This message brought to you by Bee Culture, The Magazine Of American Beekeeping

Heartland Honey and Beekeeping Supplies

19201 South Clare Road
Spring Hill, KS 66061
913-856-8356

www.heartlandhoney.com



6800 North Kircher Road
Columbia MO. 65202-7652

573-474-8837

fax 573-474-5830

walkaboutacres@agristar.net

www.walk-aboutacres.net

Your local dealer for beekeeping supplies

We generally have all of the basic
supplies in stock.

***Make your visit a family outing! We
have a "walk-about" farm,
greenhouses and honey ice cream.***



2010 Spring Meeting Program (subject to change)

Friday, March 12

- 9:00 am **1st Tour Group, Bernie Andrew's Honey Farm and State-of-the-Art Honey House**
- 10:00 am **2nd Tour Group, Andrew Honey Farm**
It's about 45 minutes driving time to Bernie's. Maps will be available at hotel, or you can Google his address at 2848 E. 1400th Street, Loraine, IL 62349
- ???? Executive Board Meeting: Time and room TBA
- 9:30-12:00 Setup for vendors in Calypso/Aloha Room
- 12:00 Registration open
- 1:00 Setup for Silent Auction in Paradise Room. Joyce Justice is in charge. Please bring items to donate.
- 1:00-1:15 Welcome and announcements from President Scott Moser
- 1:15-2:10 **Sub-lethal Effects of Miticides on Honey Bees** Jennifer Berry
- 2:15-2:45 **Basic Equipment, the Essentials of What you Need and the Choices You'll Have to Make**
Presenter TBA
- 2:45-3:10 Break, visit with vendors
- 3:15-3:45 TBA
- 3:50-4:15 **NASA and Beekeeping: What's the Connection?** Jennifer Berry
- 4:20-4:45 **Expanding Your Market with Creamed Honey** Presenter TBA
- 6:30 pm **Beekeeper of the Year Banquet, Paradise Room**
Dinner menu: **Grilled Seafood Trio** or **Roasted Prime Rib of Beef**
After Dinner Program:
 Presentation of **Beekeeper of the Year Award**
 Beekeeping in Bolivia Jennifer Berry

Saturday, March 13

- 8:00am Invocation and Greetings from Rev. Grant Gillard
Announcements from President Scott Moser
- 8:15:8:35 **Greetings from Queen Chair Joyce Justice and 2010 Missouri Honey Queen.** Bring silent auction items as a donation to support the queen program. Tables set up in prefunction area (outside meeting room).



2010 Spring Meeting Program (continued)

8:40-9:25 TBA

9:30-10:15 **Pros and Cons of Non-traditional Approaches to Varroa Control** Jennifer Berry

10:15-10:40 Break and door prize drawings, coffee in breakfast area

10:45-11:15 **Newbee Panel:** Now that you have had bees for a year or two, put together all the questions you were afraid to ask, and ask our panel of experts.

11:15-11:55 **Native Bee Research in Prairie Ecosystems** Jennifer Hopwood, Midwest Pollinator Outreach Coordinator

12:00-1:00 Lunch: Paradise Room: **Little Taste of Italy Buffet**

1:00-2:10 **University of Georgia Honey Bee Lab Research Update** Jennifer Berry

2:15-2:45 TBA

2:50-3:15 Break, end of Silent Auction. raffle prize drawing

3:15-4:15 Business Meeting, more door prizes

Support our meeting vendors and advertisers

As of press time, the following vendors had confirmed plans to attend the meeting. You can save on shipping costs by placing orders ahead of time to be picked up during the meeting.

Bee Blessed Bee Hives*

Hand-crafted poplar hives

636-274-5009

beeblessed@sbcglobal.net

Debbie Carbone and Steve Crawford

Dadant and Sons*

All beekeeping supplies

888-922-1293

www.dadant.com

Draper's Super Bee*

All beekeeping supplies

402-274-3725

Larry and Brenda Draper

Femme Osage Apiary

Handcrafted woodenware & bee supplies

636-398-5014

Ian and Pam Brown

Global Patties*

Protein patties

573-870-0597

wells.ernie@gmail.com

Heartland Honey & Beekeeping*

Beekeeping/candlemaking supplies

913-856-8356

www.heartlandhoney.com

Joli Winer and Cecil Sweeney

Walter T. Kelley Co.*

All beekeeping supplies

800-233-2899

www.kelleybees.com

Walkabout Acres*

All beekeeping supplies

573-474-8837 FAX 573-474-5830

walkaboutacres@agristar.net

Vera and Art Gelder

***See ad in this issue**

Bee Culture

THE MAGAZINE OF AMERICAN BEEKEEPING

Here's what you'll get

- Honey bees • Beekeeping • Beekeepers •
- Honey • Propolis • Bee Equipment •
- Beeswax • Current Research •
- Beginning Beekeeping How-To •
- Sideline Beekeeping • New Products •
- Honey Recipes • Book Reviews •
- Market Reports • More • More • More • More!

Skip the secretary • Call Today
Tell Us What Club You're In -
Get The Discount

**GET YOUR
BEE CLUB DISCOUNT**
\$21/1 year
\$38/2 years

Send check to:

Bee Culture Magazine
623 W. Liberty St., Medina, OH 44256
or call 800-289-7668, Ext. 3220
with credit card

Missouri State Beekeepers Association

Spring 2010 Meeting Registration Form

List all names for name tags. List any pertinent info such as Master Beekeeper, Beekeeper of the Year (and which year), name of honey business, etc.

NAME _____

ADDRESS _____

CITY _____ STATE _____ ZIP+4 _____

PHONE _____ E-MAIL _____



Pre-registration fees (Registration must be received by FEBRUARY 28, 2010)

Member \$22.00 X _____ = _____

Member Family (i.e. husband & wife, father & son etc.) \$32.00 _____
(Must have paid 2010 dues as a family)

Non-member (per person) \$30.00 X _____ = _____

Registrations made after FEBRUARY 28, 2010

Member \$25.00 X _____ = _____

Non-member \$35.00 X _____ = _____
(No family discount on late registrations)

Friday night Beekeeper of the Year Banquet

Since it is Lent, we will offer Grilled Seafood Trio or Roasted Prime Rib of Beef; please indicate your choice

FISH x _____ or BEEF x _____

Adult - \$22.00 per person (\$22.00 x _____) = _____

Child - \$10.00/child under 12 (\$10.00 x _____) = _____

Saturday lunch: Little Taste of Italy buffet

Adult - \$13.50/person (\$13.50 x _____) = _____

Child - \$7.50/child under 12 (\$ 7.50 x _____) = _____

Membership 2010 Missouri State Beekeepers Assn. Individual: ☐ Renewal ☐ New \$15.00 _____

Membership 2010 Missouri State Beekeepers Assn. Family: ☐ Renewal ☐ New \$20.00 _____

Queen fund donation Donation \$ _____

Meeting fund donation Donation \$ _____

Total \$ _____

Please make checks payable to: Missouri State Beekeepers Assn. Send to Pam Brown, 1407 Sneak Rd., Foristell, Mo. 63348 *If you pre-register and then cannot attend, your registration fee will be considered a donation and no refunds will be made. If you pay for meals and we are able to sell them you will be refunded for those. Please note – no receipt will be sent. Checks will be deposited after the meeting.*



BeeWeaver Queens, Package Bees, & Nucs

Chemical Free Since 2001. Spring Delivery.
Customer Pick Up locations in O'Fallon and Joplin.
Queens and Package Bees can be shipped.



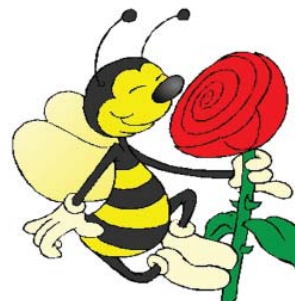
866-547-3376 phone/fax 10am-2pm M-Th (CST) info@beeweaver.com

FOR MORE INFORMATION VISIT: BEEWEAVER.COM



www.7cswinery.com
dwight@7cswinery.com
417-788-2263
502 E 560th Road
Walnut Grove MO 65770

**Live Music Sunday Afternoons
May thru September
Check Website For Mead Availability**



**We Want to Buy
Varietal Honey
2-3 Buckets or more
Per Variety**



Bee Blessed Bee Hives



Expandable Hive Assembled

\$150.00

Kit includes: 1 reversible bottom board, 2 full depth 9 5/8 select grade poplar, dovetailed brood boxes with metal rabbits, 2 - 6 5/8 select grade poplar, dovetailed supers with metal rabbits, 1 inner cover and 1 dovetailed, telescoping metal top cover (frames and foundation not included).

All Assembled

9 5/8 Hive Bodies \$29.75 (each)

6 5/8 Super (not shown) \$19.75 (each)

Metal Top Cover & Inner Cover \$32.50

Telescoping Metal Top Cover only \$24.00

Inner Cover only \$9.50

Reversible Bottom Board \$19.50

Order now and pick up at Missouri State Beekeepers Meeting in Hannibal

Contact Debbie at (636) 274-5009 or email beeblessed@sbcglobal.net. Unassembled pieces also available, call or e mail for prices.





Honey Princess Report

by Lillian-Grace Misko

Greetings Beekeepers,

What an active and cold season we have experienced this winter! Despite the weather in December, I was able to attend the Midwestern Beekeepers Association's Christmas Dinner. Not only did I get to meet new beekeepers, but I also had the treat of trying all sorts of foods.

How true it is, beekeepers absolutely know how to cook with honey! Wanting to share, I experimented and brought a new dessert (I love cooking desserts) but I accidentally overcooked it. Thankfully, it still turned out nice and sweet -- just a little crunchy and slightly dark. From that experience, I learned to decrease the temperature by 25 degrees when substituting with honey.

Each year since 1962, the Midwestern group has awarded a Beekeeper of the Year. It was my privilege to meet Andy Nowachek, who was awarded the 2009 MBA Beekeeper of the Year and the "Traveling Copper Smoker". Mr. Nowachek has been a beekeeper and part of the MBA since 2002. He works approximately 20 hives and serves as the Program Director.

I have now finished my Honey Brochure, which I am excited to introduce to beekeepers and non-beekeepers. I am looking forward to the flowers and the warm weather as much as the bees! Hope to see each of you at the upcoming events.

With care,
Lillian-Grace Misko
2010 Honey Princess



A note from the Queen Chair

by Joyce D. Justice

Needed: Ten clubs to volunteer to make one centerpiece each for the evening banquet at the Spring Meeting in Hannibal. Suggestions include flowers, seeds, etc., that are good pollinators for the bees -- let's have fun with this! Centerpieces will be judged on originality and awarded first, second and third place. Saturday at lunch time they will be auctioned off, with proceeds going to the Queen Fund.

Please remember also to bring items for the silent auction. See you in Hannibal.

Joyce D. Justice



Honey Princess Lillian-Grace Misko and Midwestern Beekeepers of the Year Andy Nowachek.

Sharon Gibbons is retiring.

Son Chris doesn't want all her stuff.

Round section comb supers -- about 20 -- with frames:

\$20 each

45 gal. stainless water-jacketed tank (Dadant): \$1000

3 Kelley Grocer's tanks (each holds 15 lbs. honey):

\$200 each

Kelley liquifying tank -- holds three buckets:

Make offer.

636-394-5395 sgibbons314@att.net

WEAVER'S FAMOUS QUEENS

And Package Bees

Buckfast & All-American

OVER 121 YEARS OF SERVICE

THE R WEAVER APIARIES, INC.

16495 C.R. 319, NAVASOTA, TX 77868

Phone (936) 825-2333 FAX (936) 825-3642

EMAIL: rweaver@rweaver.com

WEBSITE: www.rweaver.com

DRAPER'S SUPER BEE

Specializing in:

Bee Pollen

Beekeeping Supplies

Containers

Observation Hives

Call for a free pollen sample & supply catalog

(402) 274-3725

FOR SALE: Five-frame nucs, available April 15. Four-wheel drum dolly. Grant Gillard 573-243-6568



Bees Need Protein

and carbohydrate for fast build-up, good health, and maximum honey crops



Feed 4 to 6 Global Patties to each hive every spring to ensure colony health, fast build-up and maximum production.

Visit us at www.globalpatties.com for more information and feeding ideas

Your bees will thank you

Patties are available for pickup, shipping or delivery to your bee club.

Stay on schedule this year

* Save time, money, hassle and mess ...and get a better crop

* Global Patties are fast, efficient, and accurate, and the cheapest way to feed your bees

* All Global ingredients are factory-fresh and delivered promptly. Freshness is essential for maximum nutrition.

* Western Canadian field tests prove Global equals or beats other bee feeds for build-up and results.

* Pollen in our formula is irradiated by Iotron to prevent bee disease.

Global Patties

are Fast, Convenient, and Ready-Made!

Ernie Wells, Distributor
Ellsinore, MO
573-870-0597

wells.ernie@gmail.com

Five Frame Nucs

Northern
Italian
Survivor
Stock

Order
Early!
Quantities
Limited.

For sale in the spring.

\$100.00 each -- no frame exchange. Will deliver under 200 miles for a fee. If your group buys 30 nucs I will deliver free within 200 miles. Free delivery of 50 nucs within 300 miles, or 100 nucs within 400 miles.

Ernie Wells
Ellsinore MO
573-429-0222

Cookin' with Honey!

by Carrie Sayers

Honey Apple Cake with Honey Sauce

from Southern Living, September 1999

Cake

- 1 C Chopped Pecans – divided
- 2 C Sugar
- 1 C Vegetable Oil
- ¼ C HONEY
- 3 Large Eggs
- 3 C All-purpose Flour
- 1 t Baking Soda
- 1 t Salt
- 1 t Ground Cinnamon
- ½ t Ground Nutmeg
- 1 t Vanilla Extract
- 3 C Chopped Golden Delicious Apples

Method

Grease & flour 12 cup Bundt pan; sprinkle bottom of pan with ½ cup pecans – set aside. Beat sugar, oil & honey at medium speed with an electric mixer until well blended. Add eggs, 1 at a time, beating until just blended. Combine flour and next 4 ingredients. Gradually add to sugar mixture, beating at low speed just until blended. Stir in vanilla, remaining ¼ cup pecans and apples. Spoon over pecans in pan. Bake at 350 for 55-60 minutes. Cool in pan on wire rack for 15 minutes; remove from pan and place on wire rack over wax paper. Pour ½ cup honey sauce over warm cake. Cool. Heat remaining honey sauce; serve with cake and if desired, ice cream.

Honey Sauce -- Yield 1 1/2 Cups

- 1 C firmly packed brown sugar
- ½ C butter (preferably unsalted)
- ½ C HONEY
- ½ C Milk

Bring all ingredients to a boil in a medium saucepan over medium high heat, stirring constantly; boil, stirring constantly 2 minutes.

Carrie Sayers (www.sayerscatering.com) is a second-year beekeeper in Glendale, MO, and has been cooking with honey for years.

TIP for cooking with honey

When substituting honey for sugar in a recipe: For each cup of honey used, reduce any liquid in the recipe by ¼ cup and add 1 teaspoon of baking soda. Also, if baking, reduce oven temp by 25 degrees to prevent over-browning.

DADANT FRAMES

Glue & Side
Staple

3/4" Top Bar

THE STANDARD OF THE INDUSTRY!
PREFERRED BY
PROFESSIONAL BEEKEEPERS
FOR GENERATIONS, AND THE
FRAME OTHERS STRIVE TO DUPLICATE!

Available
Unassembled and
Assembled as shown



51 S. 2nd Street
Hamilton, IL 62341

1-888-922-1293 • www.dadant.com

- Chico, CA (877) 332-3268 ▪ Fresno, CA (877) 432-3268 ▪ Paris, TX (877) 632-3268 ▪
- Sioux City, IA (877) 732-3268 ▪ Watertown, WI (877) 232-3268 ▪ Albion, MI (877) 932-3268 ▪
- Waverly, NY (877) 532-3268 ▪ Chatham, VA (800) 220-8325 ▪ Frankfort, KY (888) 932-3268 ▪ High Springs, FL (877) 832-3268 ▪

1/2" Bottom Bar





Local Beekeepers Associations

Beekeepers Association of the Ozarks

4th Tuesday of each month, 7:00 p.m.
The Library Center, 4653 S. Campbell, Springfield
www.ozarksbeekeepers.org

Boone Regional Beekeepers Association

3rd Sunday of month, 1:00 p.m., Columbia Insurance Group, 2102 Whitegate Dr. (back door), Columbia
Contact Art Gelder 573-474-8837
<http://beekeeper.missouri.org>

Busy Bee Club

4th Tuesday of each month, 7:00 p.m., Cedar County Health Center, Owens Mill Road, Stockton
Neal Lee 417-276-3090 Neil Brunner 314-276-4252
grnthumb@alltel.net

Eastern Missouri Beekeepers Association

2nd Wednesday of each month, 7:00 p.m., Powder Valley Nature Center 11715 Craigwold Rd., Kirkwood
Bob Sears, President 314-479-9517
www.easternmobeekers.com

Jackson Area Beekeepers

4th Tuesday of each month, 7:00 p.m.
First Pres. of Jackson, 206 E. Washington
Contact Grant Gillard 573-243-6568
gillard5@charter.net

Jefferson County Beekeepers Association

2nd Tuesday of each month, 7:30 p.m., Hwy B & 21 Jefferson County Extension Center, Hillsboro
Contact Scott Moser 636-285-7295

Joplin Area Beekeepers Association

Last Tue. of each month, 7 pm, SM Bank Community Building (7th and Duquesne Rd), Joplin
Contact Gene Foley 417-624-6831

Mid Missouri Beekeepers

3rd Sunday of each month, 2 pm, St. James Tourist Ctr.
Contact Don Moore 573-265-8706

Midwestern Beekeepers Association

Nov-March, 3rd Sunday of each month, 2:30 p.m.
April-Oct, 3rd Thursday of each month, 7:00 p.m.
Bass Pro Shop, Independence, Conservation Room
Cecil Sweeney, President 913-856-8356

Mississippi Valley Beekeepers Association

Last Tuesday of Month in Quincy, IL
Contact Debi Bridgman 573-439-5228

Missouri Valley Beekeepers Association

3rd Monday of each month, 7:00 p.m.
Scenic Regional Library, Union
Contact Rodney Angell 573-764-2922
bee143@fidnet.com

Parkland Beekeepers

3rd Tuesday of each month, 108 Harrison, Farmington
Contact Gene Wood 573-431-1436

Pomme de Terre Beekeepers

2nd Thursday of each month, 7 pm
Missouri Extension Office, Hermitage
Contact Bessi Shryer 417-745-2527

South Central Missouri Beekeepers Association

1st Friday of month, Howell Electric Coop, West Plains
Monty Wiens, President 417 257-3994

Southern MO Beekeepers of Monett "MOBees")

3rd Tuesday of each month, 7:00 p.m.
Monett High School VO-AG Building
Robert Sperandio, President 417-235-6959

Southwest Beekeepers Association

1st Tuesday of month, Neosho High School FFA Building
Contact Herb Spencer 417-472-7743

Three Rivers Beekeepers

3rd Monday of month, University of Missouri Extension, 260 Brown Road, St. Peters, Missouri, 7:00 p.m.
For info: 2952 Greenleaf Drive, St. Charles, MO 63303
info@threeriversbeekeepers.com

Can't find a club near you? Contact President Scott Moser for help getting one started.

THE HAWLEY HONEY COMPANY

220 North Elm Iola, KS 66749

620-365-5956 (After 8 pm 620-365-7919)

White clover honey strained in 5-gallon buckets. We will pack it in your jars for an extra fee.

Bee Equipment - New and Used - Used Extractors

Corn syrup, sugar syrup and SUGAR

Bees -- Frames of brood

Call for prices.

Can deliver to Kansas City, Joplin or Butler, MO

FOR SALE:

PACKAGE BEES

For April pickup in Lynnville, Iowa or Hamilton, Illinois.

These are 2# and 3# packages from C.F. Koehnen and Sons. Your choice of Italian or Carniolan queens.

Carniolan queens will be available separately beginning in mid April.

Contact Phil Ebert:

641-527-2639

ehoney37@netins.net

**MSBA Membership Application**

Name _____
Spouse's Name _____
Address _____
City/State/Zip _____
Phone Number _____ Email _____

NOTE: If you belong to a local association, please pay your state dues through your local club.

State Association Dues (Check only one box)

Adult Membership \$15.00 ☐ **Amount Enclosed \$** _____
Family Membership \$20.00 ☐ Make check payable to: Missouri State Beekeepers Association
Student Membership \$5.00 ☐ Mail to: P.O. Box 448 Oak Grove, MO 64075

Magazine Discounts: Discounts are available for MSBA members to two beekeeping magazines. You may use their order forms and mail them yourself to the publishers as shown below:

**AMERICAN
BEE JOURNAL****ASSOCIATION
MEMBER SUBSCRIPTION**

SAVE 25%

Association _____ Secretary's Name _____
Subscriber's Name _____ Address _____
Address _____ City _____
City _____ State, Zip _____
State, Zip _____ Comments _____
☐ NEW ☐ RENEWAL U.S. ☐ 1 Yr. - \$19.50 ☐ 2 Yr. - \$37.00 ☐ 3 Yr. - \$52.15

(PRICES GOOD THROUGH DEC. 31, 2010)

Return white copy to: American Bee Journal, 51 S. 2nd St., Hamilton, IL 62341

• Retain yellow copy for your records.

ROOT™
PUBLICATIONS**ASSOCIATION MEMBER SUBSCRIPTION**
Bee Culture Magazine

Please Print Clearly

Association _____ Secretary's Name _____
Subscriber's Name _____ Address _____
Address _____ City _____
City _____ State, Zip _____
State, Zip _____ Comments _____
Phone # _____

For Office Use Only
Acct. # _____

☐ NEW ☐ RENEWAL ☐ 1 Yr. - \$21.00 ☐ 2 Yr. - \$38.00

Canada - add \$15.00 per year
All other foreign add \$20/year

Return white copy to: Bee Culture, Subscription Dept., P.O. Box 706, Medina, OH 44258

Please discard any other forms. Use only this form. Prices subject to change without notice.



Honey Queen Report

by Ginny Devine

Hello,

This past weekend I was volunteering at a local nursing home (I am a certified Medical Technologist) when I was introduced to a new product called Medihoney. Medihoney is a new Standardized Antibacterial Honey which is effective against a broad spectrum of bacteria, including antibiotic-resistant strains. It is used as a wound care dressing and provides an antibacterial barrier for wounds. It is also used in the treatment of pressure ulcers, leg/foot ulcers, surgical wounds, burns, acute and chronic wounds, donor and recipient graft sites, and general first aid. It is used widely among nursing homes because of its fast, effective autolytic debriding action for the removal of slough and necrotic tissues in an antibacterial environment. Medihoney is effective against more than 200 clinical strains and it reduces the risk of infections. This natural product benefits patients because it reduces trauma and pain during dressing changes. This product aids in various skin conditions including psoriasis, eczema, and burns. It is amazing to see how something that is usually considered as food now has more by-products that are used in our everyday lives.

Sincerely,

Your 2010 Missouri Honey Queen

Ginny

To schedule an appearance by our Honey Queen, contact Queen Chair Joyce Justice, whose contact information appears at right.



Directory of Officers

- President: Scott Moser** 636-285-7295
6600 Davis Lane, Cedar Hill, MO 63016
president@mostatebeekeepers.org
- Vice President: Grant Gillard** 573 243-6568
3721 North High Street, Jackson, MO 63755
vicepresident@mostatebeekeepers.org
- Secretary: Ken Sona*** 314-303-4646
19 McClay Crossing, St. Peters, MO 63376
secretary@mostatebeekeepers.org
- Treasurer: Ron Vivian** 816-690-7516
443 Fricke Road, Bates City, MO 64011-8280
treasurer@mostatebeekeepers.org
- Past-President: Ken Norman** 417-669-4452
3634 Shiloh Church Road, Marionville, MO 65705
pastpresident@mostatebeekeepers.org
- Western Director: Brian Norris** 816-668-9365 cell
3388 Mountain View Road Bates City, MO 64011-8161
bellhilloperators@yahoo.com
- Southern Director: Marlin Trout** 417-830-7749
20445 Lawrence 2070, Ash Grove, MO 65604
southwdir@mostatebeekeepers.org
- Eastern Director: Steve Harris** 636-946-5520
1224 Sherbrooke Road, St. Charles, MO 63303
eastdir@mostatebeekeepers.org
- Southeastern Director: Ray Batton** 573-785-1980
3032 N. 14th St., Poplar Bluff, MO 63901
southedir@mostatebeekeepers.org
- Program Chairperson: Sharon Gibbons*** 636-394-5395
314 Quinnmoor Dr., Ballwin, MO 63011
sgibbs314@earthlink.net
- Newsletter Editor: Eugene Makovec** 314-965-4631
643 Pearl Ave., Kirkwood, MO 63122 314-703-7650 cell
editor@mostatebeekeepers.org
- Auxiliary Treasurer: Dolores Vivian** 816-690-7516
443 Fricke Road, Bates City, MO 64011-8280
Hlybee@aol.com
- Queen Chairperson: Joyce Justice** 816-358-3893
P.O. Box 16566, Raytown, MO 64133-0566
queenchair@mostatebeekeepers.org
- State Fair Chairman: Dean Sanders** 816-456-4683 cell
37804 Old Pink Hill Road, Oak Grove, MO 64075
- State Entomologist: Collin Wamsley** 573-751-5505
collin.wamsley@mda.mo.gov
- Associate Professor of Entomology: Richard Houseman**
HousemanR@missouri.edu 573-882-7181
1-87 Agricultural Building, University of Missouri-
Columbia, Columbia, MO 65211

*We need volunteers to fill the positions of Secretary and Program Chair. Please contact Scott Moser or Grant Gillard for information.

Wanted to buy:

2009 honey, St. Louis city/county area. Must be unheated/unfiltered.

Eugene Makovec
emakovec@sbcglobal.net
314-703-7650

For sale:

Six drums of light 2009 honey -- \$1.65 per lb., possibly lower if you buy all six.

Brian Norris 816-668-9365
bellhilloperators@yahoo.com

**HONEY
TRADIN'
POST**

Need to buy or sell honey or related products? Contact the editor to post your needs here. Members only.

Missouri State Beekeepers Association

P.O. Box 448 Oak Grove, MO 64075

www.mostatebeekeepers.org



Snowbees spotted in Centerview! Honey Princess Lillian-Grace Misko makes some new friends following a mid-January snowstorm.
photo by Cathy Misko

This newsletter is published six times per year, in even months. Submissions are due by the 15th of the month prior to publication.

The email edition is in color, and contains hyperlinks and bonus back-page material, while the print version is in black-and-white. If you are a member currently receiving the printed newsletter and you wish to upgrade, just send an email to editor@mostatebeekeepers.org with "email newsletter" in the subject line. I'll reply with confirmation, and add you to my list.

Advertising rates are as follows:

Business card size	\$15.00	Half page	\$50.00
Quarter page	\$35.00	Full page	\$100.00

Classified Ads: Advertise one to three beekeeping-related items in a one-line ad at no charge. This service is for non-commercial MSBA members only, and is limited to one ad per item per calendar year.

Honey Trading Post: This is a free service to members wishing to buy or sell honey on a wholesale basis. Just email or call the editor with contact information and whether you are buying or selling. Pricing is between the interested parties.